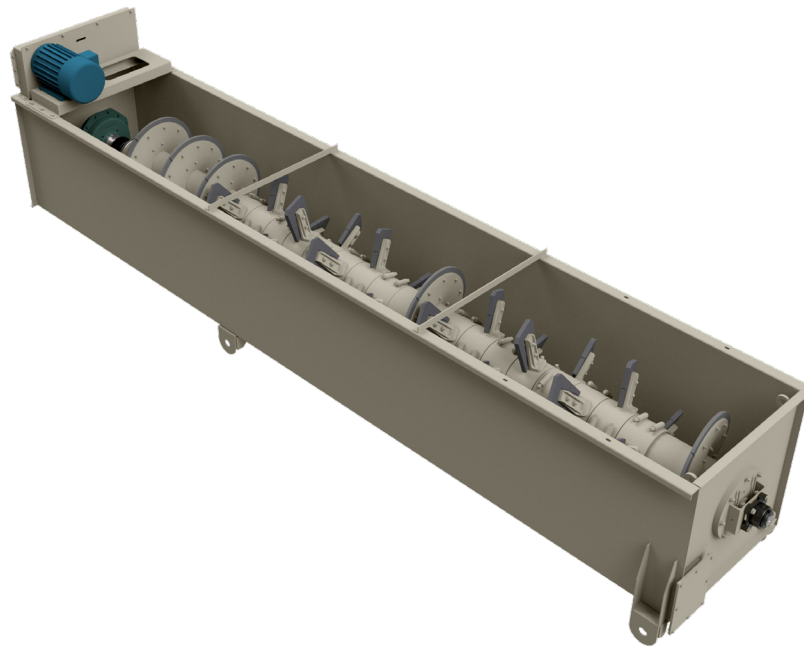


6536-19S

Blademill



Spiral Assembly

- Spiral pipe - heavy wall 12" dia.
- Double pitch, combination flight/paddle configuration with cast ni-hard outer wear shoes, AR steel inner wear shoes and two-piece cast ni-hard paddle tips
- Standard configuration - One (1) weld-on flight at the tail end, four (4) sets of bolt-on paddles (each set equivalent to (1) 360° flight), one (1) bolt-on flight, four (4) sets of bolt-on paddles (each set equivalent to (1) 360° flight) and three (3) weld-on flights at the head end.
- Greaseable, externally mounted Dodge® Imperial E tail end flange bearing
- Greaseable Dodge® pillow block head end bearing
- Lower End seal - chrome plated stainless steel wear sleeve, water tight bellows type rubber seal and secondary grease seal

Main Tank

- 1¼" (sides & bottom) and 3/8" (rear end plate) welded plate steel construction
- 4" fresh water inlet in the tail end
- Long narrow tub
- "Pinned" mounting locations
- 13"x10" rear clean-out port in the tail end

Drive Assembly

- High efficiency v-belt drive assembly
- 25hp TEFC motor
- Dodge® RA-II double reduction shaft mount reducer

Discharge Chute

- Tapered steel discharge chute

Feed Box (optional)

- 42" square feed opening with 3" header pipe

Physical/Operating Characteristics

Dimension	Standard	Metric
Feed Material	2 1/2" x 0	63.5mm x 0mm
Angle of Operation	0° - 4°	0° - 4°
Capacity	Up to 175 TPH	Up to 159 MTPH
Shaft Speed	30 rpm	0.5 Hz
Water requirements	Up to 200 gpm	Up to 45.42 m ³ /h
Operational Length	23' 5"	7.14m
Operational Width	4' 5"	1.35m
Operational Height	5' 2"	1.57m
Approx. Dead Load	9,800lb	4,445kg
Approx. Live Load	15,800lb	7,167kg
Approx. Total Load	25,600lb	11,612kg

Single Spiral Configurations

Model	Capacity	Spiral Speed	Minimum Motor HP	Water REQ'D
	TPH	RPM		GPM @ 25 PSI
6536-19S	150-175	30	25	100-200

Twin Spiral Configurations

Model	Capacity	Spiral Speed	Minimum Motor HP	Water REQ'D
	TPH	RPM		GPM @ 25 PSI
6536-19T	300-350	30	25	175-350
6548-23T	400-500	22	40	200-400

Two (2) motors required on twin units. 24" dia. unit offered only in single spiral configuration

