

ROADTEC SX-5 STABILIZER/RECLAIMER







BUILT TO CONNECT

Astec Industries' Roadtec SX-5 stabilizer/reclaimer provides industry-leading road reclamation and soil stabilization for highways, interstates, and more.

The Roadtec brand has been an integral member of the Astec Industries family since 1981. By aligning all Astec brands, we harness the power of a comprehensive dealer network, expansive parts distribution, and robust service.

Based in Chattanooga, Tennessee, Astec was founded in 1972 with the vision to supply creative thinking and state-of-the-art technologies to Rock to Road industries.

Today Astec manufactures more than 100 products in 25 facilities worldwide. Astec products include:

- Rock crushing plants.
- Screening plants.
- Hot mix asphalt facilities.
- Concrete plants.
- Asphalt pavers.
- Recycling solutions.
- Forestry solutions.

Astec is committed to placing the customer first. We focus on customer-driven innovation in everything we do. This approach informs how we design, build, and service our products.

As part of Astec Industries we are Built to Connect today, tomorrow, and in the future. This means that our products, services, and solutions connect communities. We design and develop innovative and sustainable industry-leading soil stabilizers/reclaimers through collaboration, modernization, and teamwork. We are Built to Connect.

KEY FEATURES



1 Water Emulsion Additive System

A water emulsion additive system uses simple controls to easily control and monitor additive system parameters, such as flow intensity and spray nozzle activation.

2 Four Available Steering Options

SX-5 operators can choose coordinate, crab, front only, or rear only steering. These options are easily controlled via joystick, enabling quick response and smooth changes, ensuring the best in maneuverability.

3 Intuitive Controls with Joystick

Intuitive, easy to reach joystick controls allow SX-5 operators to work quickly and comfortably. Simple and straightforward controls are clearly marked and backlit to increase worker safety and convenience.

4 Variety of Drums to Fit Specific Applications

Astec offers a variety of drums, each one specifically designed to fit your specific application.



5 Airflow

The SX-5 has an efficient cooling system that pulls air from the top of the machine, where it is cleanest. The air is exhausted through the rear radiator packs. Pulling air in this way limits the dust that travels through the cooling system.

6 No Unnecessary Parts

The SX-5 features a fixed drum, so there is no need for a breaker bar as on other models. Astec's SX-5 achieves the desired gradation with fewer wear components.

7 High Torque Hydrostatic Cutter Drive

The SX-5's hydraulically driven cutter drum delivers consistent power for reliable and steady operation throughout the job.

8 Higher Quality Gradation with One Pass

Astec machines are unique in that the area between the drum and housing is small enough that gradation is automatic. Since our drum is fixed to the housing, you do not need to worry about large chunks of material getting through. You can achieve a higher quality, fine gradation with one pass.

BALANCED WEIGHT AND OPTIMAL POWER

The SX-5 stabilizer/reclaimer is ideal for soil stabilization and light reclamation. The clean running 513 hp SX-5 provides high performance power through a hydrostatic drum drive. Whether you need to prepare a new surface or recycle existing road surfaces, the ability to cut up to 96 inches wide and 16 inches deep makes the SX-5 ideal for soil stabilization and road rehabilitation.

Balanced Weight and Wheel Power

Weight is evenly distributed between two axles and balanced over the cutter. Even distribution enables optimal controlled power. The SX-5 is all-wheel drive. Four drive pumps deliver 100 percent traction control, enabling the SX-5 to perform consistently in the most challenging environments. The weight is distributed with functionality, productivity, and safety in mind. This way, traction is constant. The balanced 4-wheel drive allows you to adjust the machine to perform best in any situation.

Designed with Durability and Flexibility

- The SX-5 is constructed with a durable frame fabricated from A656 grade 80 steel, which has twice the yield strength as steel used in competing machines.
- The wheels on the SX-5 are heavy duty and prevent rim slippage and tire failure. Tires are deep tread, high-flotation tires that make sure you get the most from the SX-5's power and maneuverability.

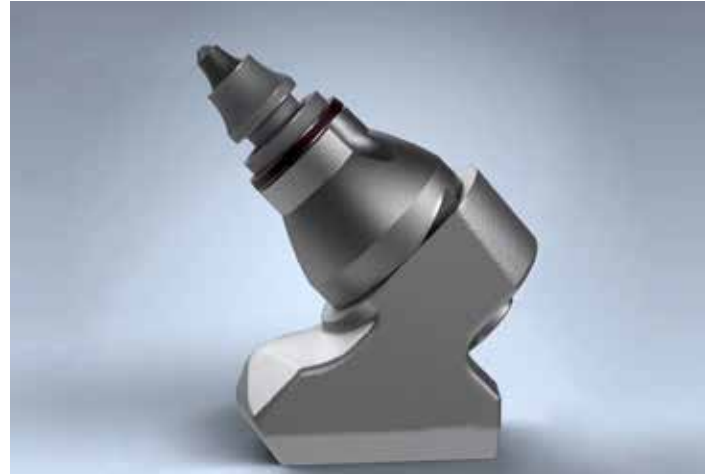


DURABLE DESIGN



Innovative Cutter Drum and Drive

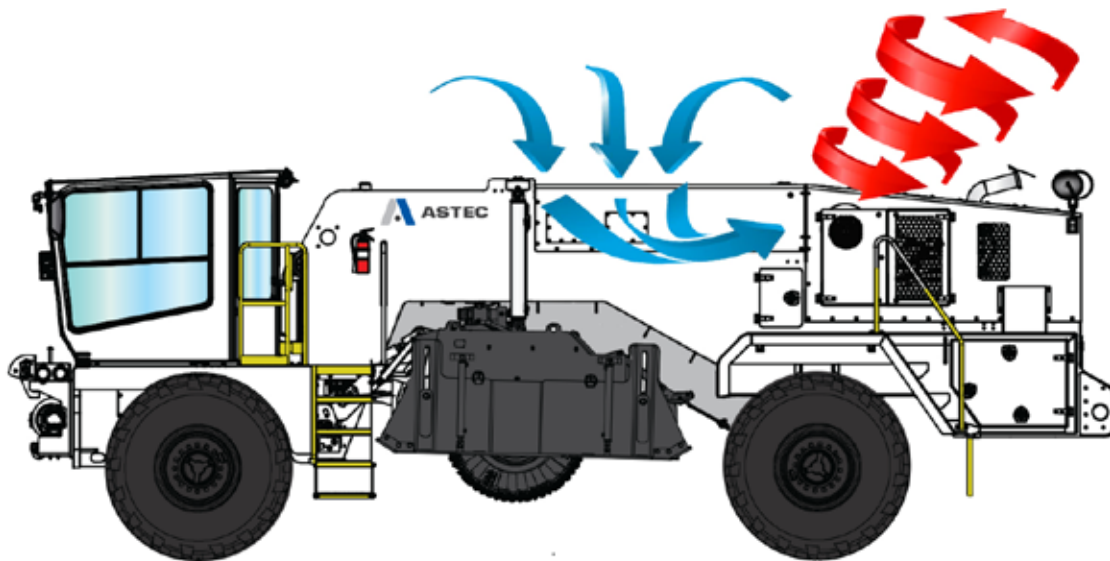
- The cutter is driven hydraulically with dual planetary gearboxes, delivering consistent power to the drum.
- Heavy-duty front and rear doors are hydraulically adjustable for additional control of gradation flow. Room behind the drum provides for exceptional mixing and incorporation of additive.
- A fixed drum eliminates the need for a breaker bar as on other models, and desired gradation can be achieved with fewer wear components.



Long Wearing Teeth

The sleeve has a longer wear nose for enhanced durability. Notches in the nose allow cutter bits to be removed from the front with a fork tool. Notches in the seating face allow the sleeves to be removed from the front with a small wedge tool.

The Quick Change™ holder fully seats against the base block for maximum retention and wear resistance. When combined, these features add to the performance and durability of the cutter tooling system.



Efficient Cooling System

The SX-5's cooling system brings air from the top of machine, where it is the cleanest, and exhausts it through the rear radiator package. Pulling air in this way limits the dust that travels through the cooling system. A variable speed fan provides efficient cooling based on engine demand, and an auto fan reverse at startup allows for cleaning of debris.

MAXIMIZE PRODUCTIVITY

Excellent Visibility, Safety, and Comfort

Ergonomic Seating and Intuitive, Easy to Reach Controls

While efficiency and durability are essential to a stabilizer's success, it cannot be at the expense of safety. That's why the SX-5's operator cabin is designed to enable operators to work safely and securely. The cabin is temperature controlled, pressurized, and dust free. Soundproofing protects hearing and facilitates clear communications.

Unparalleled Visibility

The operator enjoys unobstructed sight lines, and for those areas that are inaccessible, there are cameras with easy to view display screens. The operator station will shift from left to right and pivot from the straight ahead position to 90 degrees left or right.

The SX-5 includes a high resolution back up camera. A screen inside the cab displays the area directly behind the SX-5 as soon as reverse is selected. The back up camera adds a level of comfort and convenience when navigating.





1 Supreme Comfort for Less Downtime

The operator cabin offers ample space to work comfortably and productively. The temperature-controlled cabin provides protection from weather and elements. Operators can work in cold and heat, as the cab has a fully enclosed and pressurized A/C and heating system.

2 Unobstructed Access

Large side access doors and slide out battery racks simplify daily checks and preventative maintenance tasks.

3 Remote Air Compressor

Changing teeth with a power pneumatic tool is straightforward and safe with a remote air compressor to power tools.

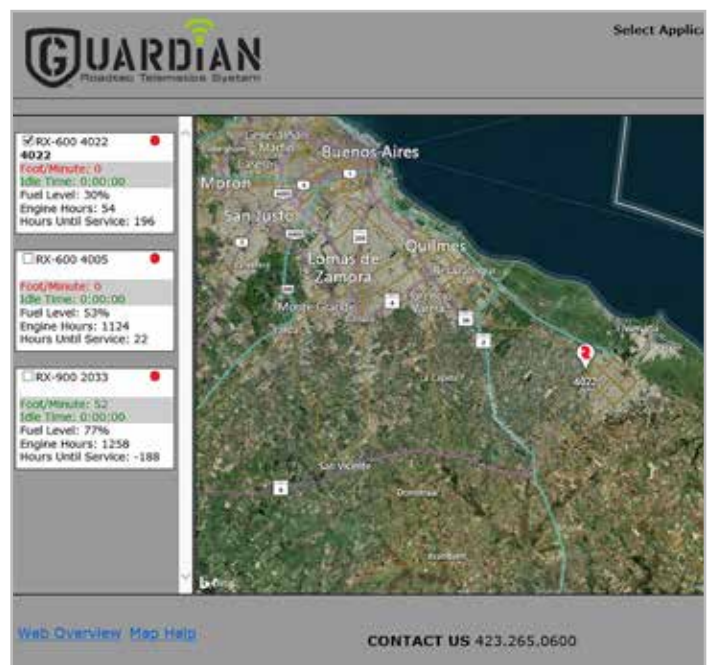
4 Convenience at Your Fingertips

Simple and straightforward joystick controls are clearly marked and effortlessly accessible from the operator's ergonomic seat. All controls are perfectly calibrated for maximum efficiency and allow easy operation of multiple functions and options.

OPTIONS

Protect your investment and keep operating costs low by monitoring your machines in real time through a wireless signal with the Guardian® Telematics System. Guardian is the industry's only live 2-way telematics system. Guardian includes software, on-machine viewing screens, and wireless signal boosters to send and receive data in real time from anywhere at anytime.

Guardian provides the data you need to make changes in real time to mitigate risks and increase profits. Guardian's intuitive Live Schematics™ lets owners and technicians view electrical circuits in a simple, efficient layout with real time status of switches, valves, and settings.





RX-505

Detail	Spec
Engine	Cummins® QSG12 513 hp (382 kW) @ 1,900 rpm
Shipping Weight	62,000 lbs* (28,122 kg) <i>*120 gal fuels & water/injection system</i>
Cutting Width	96 in (2,438 mm)
Cutting Depth	16 in (406 mm)



Drum Spacing (weld-on or quick change tooling)
0.737 in (18.7 mm) and 1.047 in (26.5 mm)

Options

Water & Emulsion Additive System
500 gpm (1,893 lpm) capacity with fully automatic controls and manual override
Tow Hitch
Rear assembly tow hitch to pull tanker
16" (406 mm) Cut Depth
50 in (1,270 mm) diameter drum required
Additional Lighting
(4) 24v high intensity discharge lights
Additional Cameras
Drum Spacing (weld-on or quick change tooling)
0.737 in (18.7 mm) and 1.047 in (26.5 mm)



Water & Emulsion Additive System

System has a 500 gpm (1,893 lpm) capacity with fully automatic controls and manual override



ASTECTM

www.astecindustries.com