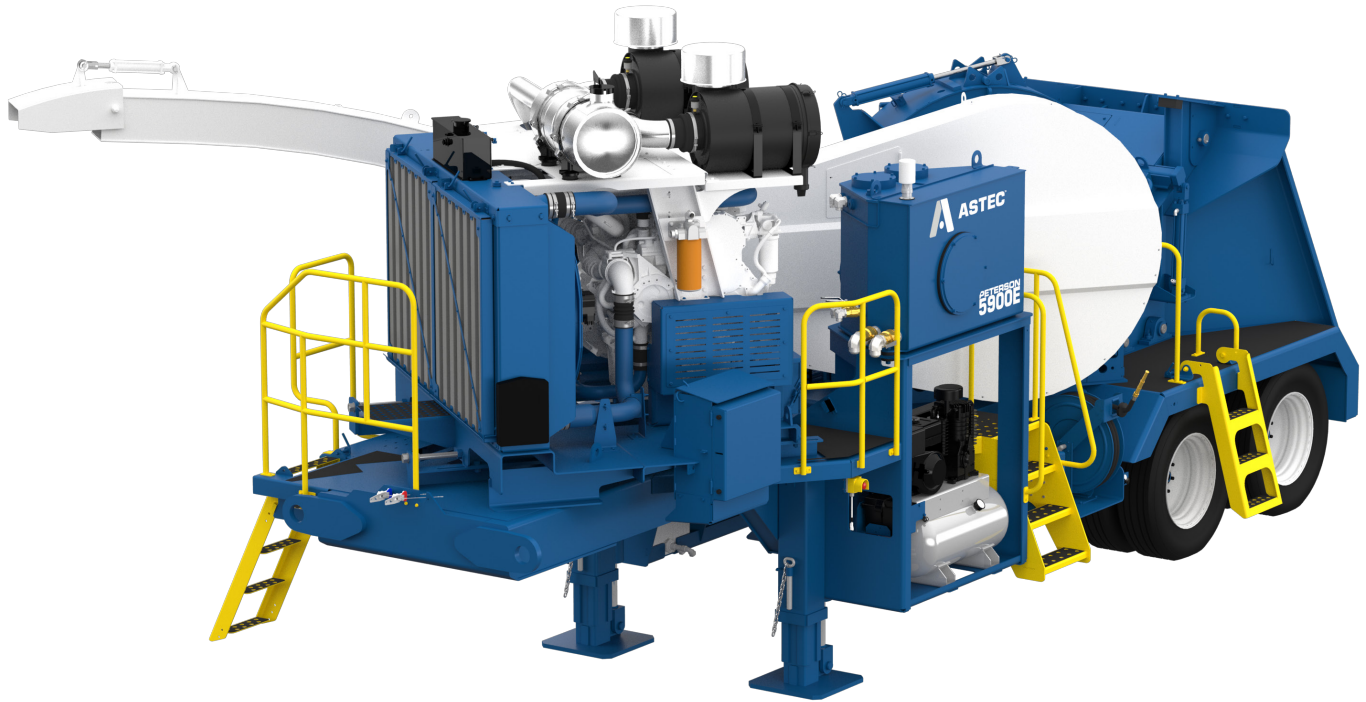


# 5900E

## Disc Chipper



### Chipper

- Chipper Disc: three pocket, 66 in (167 cm) diameter, standard
- Knives: standard three knife configuration
- Chip chute: side loading with hydraulic fold cylinder
- Discharge: hydraulic swivel discharge spout
- Dirt separator: removes contaminants, overs, fines and slivers

### Powertrain

- Caterpillar C18, Tier III
- 765 hp (570 kW)
- PT Tech HPTO 14FX
- Fuel tank capacity: 300 gallon (1,135 L)
- Hydraulic tank capacity: 110 gallon (416 L)
- Auto reversing fans

### Feed System

- Floating upper direct drive feed roll
- Direct lower feed roll
- 23 in (58 cm) feed opening
- Feed speed range: up to 155 ft/min (47 m/min)
- Chip size range: ¼ to 1 in (6-25 mm)

### Controls

- Peterson Adaptive Control System (IQAN), Optional wireless link with Peterson flail

### Optional Equipment

- Four pocket chipper disk
- Chipper knives (Babbitt or Key Knife™)
- Night operation lights
- Top loading spout
- Rear Landing gear
- Cold weather kit
- Export fifth wheel pin
- Export lifting eyes
- Dual lower feed roll

## Physical & Operating Characteristics

Dimension	Imperial	Metric
<b>A</b> Travel Length	28'-11"	882 cm
<b>B</b> Travel Height	13'-7"	414 cm
Operating Width, not shown	22'-1 <sup>3</sup> / <sub>4</sub> "	675 cm
<b>C</b> Travel Width	9'-6"	290 cm
<b>D</b> Operating Length	33'-0"	1,006 cm
Operating Height, not shown	17'-3"	526 cm
<b>E</b> Front to 5th Wheel	18"	46 cm
<b>F</b> 5th Wheel to Center Axle	18'-10 <sup>1</sup> / <sub>2</sub> "	575 cm
<b>G</b> 5th Wheel to Rear Axle	23'	700 cm
<b>H</b> Axle Spacing	49"	125 cm
<b>I</b> Kingpin to Rear Bumper	26'	792 cm
<b>J</b> 5th Wheel Height	4'-1 <sup>1</sup> / <sub>2</sub> "	125 cm

## Dimensions

Dimension	Imperial	Metric
Travel Length	31'-3"	952 cm
Travel Width	9'-6 <sup>3</sup> / <sub>4</sub> "	291 cm
Travel Height	13'-7"	414 cm
Front to 5th Wheel	18"	46 cm
5th Wheel to Front Wheel	18'-10 <sup>3</sup> / <sub>4</sub> "	575 cm
5th Wheel to Rear Wheel	23'	700 cm
Front to 5th Wheel	26'- <sup>1</sup> / <sub>4</sub> "	793 cm
Front Height	4'-1 <sup>1</sup> / <sub>2</sub> "	125 cm

## Weight/Axle/Suspension

Dimension	Imperial	Metric
Total Weight (approximate)	46,600 lb	21,133 kg
5th Wheel Weight (approximate)	17,400 lb	7,890 kg
Tandem Axle weight (approximate)	29,200 lb	13,243 kg
Wheel Base (2 axle)	23'	701 cm

