

IntelliPac™ Moisture System

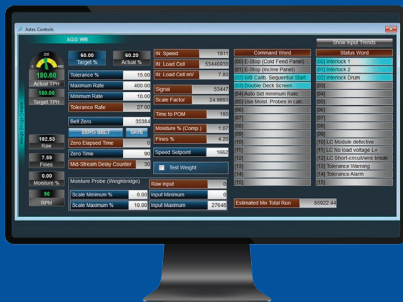


Astec's IntelliPac™ Moisture System provides asphalt producers with real-time tracking for making smarter decisions, simplifying processes, cutting costs, and enhancing overall efficiency in asphalt production.



Sensors are installed at the discharge of the feeder on multiple cold feed bins, primarily focusing on fine aggregates. Adaptable for retrofit applications.

Sensor data can be integrated into plant controls.



The IntelliPac™ Moisture System sensors offer three tiers tailored to meet the specific needs of your plant.

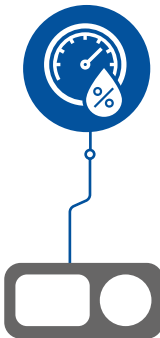
TIER ONE

Standalone display of real-time moisture values. Controls integration not included.

No minimum requirements.

Includes:

Sensor, mount, standalone display



TIER TWO

Real-time moisture values integrated into Astec plant controls.

Legacy Astec controls support available.

Includes:

Sensor, mount, controls integration, power & signal wiring, electrical panel and operator display



TIER THREE

Real-time moisture values of all virgin aggregates integrated into Astec plant controls.

Requires instrumentation of all feed bins and latest Astec controls.

Includes:

Sensor, mount, controls integration, power & signal wiring, electrical panel and operator display





Revolutionize your asphalt production with Astec's IntelliPac™ Moisture System. With the power of real-time moisture content sensing, this cutting-edge technology not only optimizes mix designs but also conserves asphalt cement, elevates fuel efficiency, and streamlines inventory management. Experience a new era in precision and efficiency with Astec's IntelliPac™, setting the standard for innovation in the asphalt industry.

FEATURES	TIER 1	TIER 2	TIER 3
Operational visibility into virgin aggregate moisture, enabling changes based on real-time moisture values	✓	✓	✓
Data logging for virgin aggregate composite moisture	✓	✓	✓
Patented moisture measurement method	✓	✓	✓
Integration of real-time moisture values into plant controls, resulting in: <ul style="list-style-type: none"> • More accurate AC dosing (control authority up to +/- 2% moisture) • More accurate inventory control 		✓	✓
Sensor calibration profiles linked to controls system		✓	✓
Extended sensor life due to lack of contact with aggregates	○	○	✓
Sensor Condition Monitoring	○	○	✓
Sensor Remote Troubleshooting	○	○	✓
Increased control authority (up to +/- 4% constituent moisture)			✓
Data logging for moisture of all constituent aggregates			✓



www.astecindustries.com



SCAN TO LOCATE
YOUR PARTS SALES
REPRESENTATIVE